

Port Authority® Ladies Textured Hooded Soft Shell Jacket L706

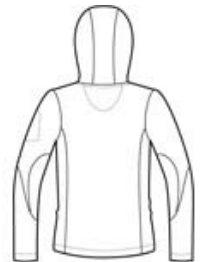


Our hooded soft shell stands up to the elements and stands out with texture and bar tack details. Highly breathable and soft, this water resistant jacket is just right for the workday or the weekend. A hood and zippered sleeve vents add function and up-to-the-minute appeal.

- 96/4 poly/spandex woven shell bonded to 100% polyester microfleece with laminated film insert to repel water and wind
- 1000MM fabric waterproof rating
- 1000G/M² fabric breathability rating
- Gently contoured silhouette
- Hood with drawcord and toggles for adjustability
- Storm flap with chin guard
- Ergonomic zipper pulls
- Princess seams
- Zippered chest and sleeve pockets with contrast bar tack
- Front zippered pockets with contrast bar tack
- Port Pocket™ for easy embroidery access
- Open hem



front

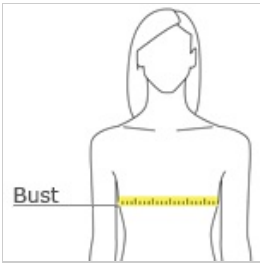


back

CARE INSTRUCTIONS

[Tips For Effectively Screen Printing Polyester Fabrics](#)

HOW TO MEASURE



BUST
With arms down at sides, measure around the upper body, under arms and around the fullest part of the bust.

SIZE CHART

	XS	S	M	L	XL	XXL	3XL	4XL
Size	2	4/6	8/10	12/14	16/18	20/22	24/26	28/30
Bust	32-34	35-36	37-38	39-41	42-44	45-47	48-51	52-55

COLOR INFORMATION



Black/Engine Red Chalk
PMS 426 C



White/Charcoal
PMS WHITE



Charcoal/Lemon Yellow
PMS 426 C



Mineral Green/Soft Orange
PMS BLACK 7 C